



Creating age-friendly communities

Dementia New Zealand
Wellington Symposium
3 May 2018

Age-friendly WHO model

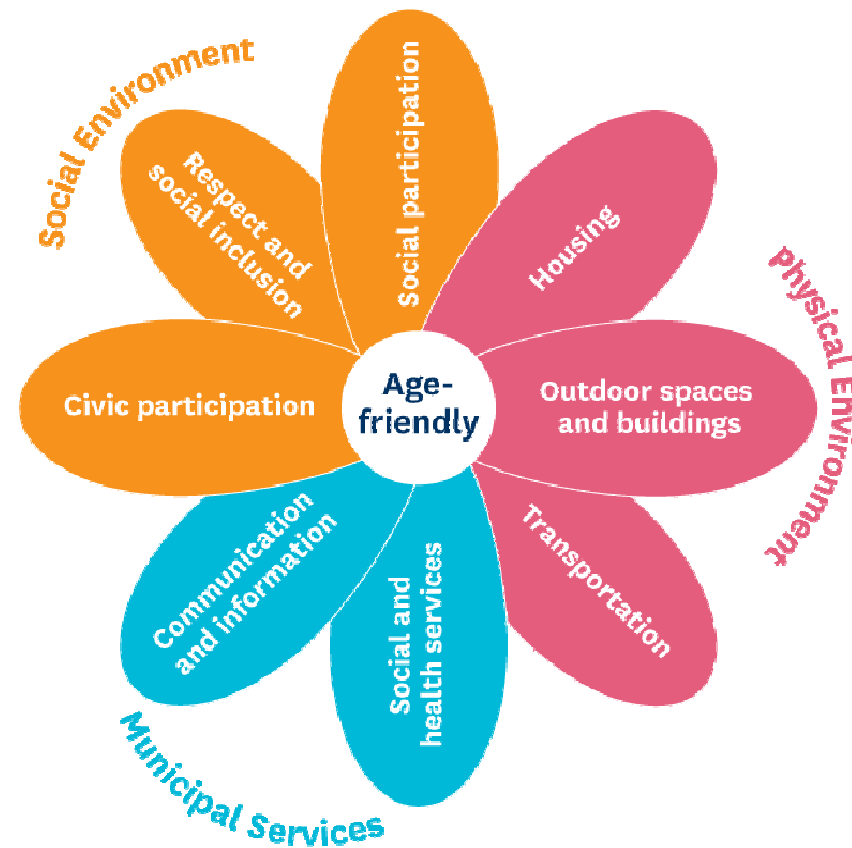
Response to population demographics

Age-friendly community

- Respect
- Access
- Multi-generational
- Participation



Using the WHO age- friendly model



Age-friendly – what's involved?

1. Get agreement on area to be covered
2. Assess community needs
3. Develop an action plan
4. Implement the Plan
5. Evaluate



Similarities with Dementia friendly



Differences

Age-friendly	Dementia friendly
Considers a broad spectrum of senior needs Inclusive framework	Combats stigma of dementia Engages caregivers

Opportunities



Shared risks

Accessibility friendly, autism friendly, biophilic cities, child-friendly communities, compact cities programme, creative cities, eco-cities, global cities, healthy cities, inclusive cities, intercultural cities, welcoming communities, liveable cities, resilient cities, sharing cities, smart cities.....

Central government work





Office for Seniors Te Tari Kaumātua

Administered by the Ministry of Social Development



superseniors.msd.govt.nz



osc@msd.govt.nz



[@OfficeforSeniors](https://www.facebook.com/OfficeforSeniors)



[@SuperSeniorsNZ](https://twitter.com/SuperSeniorsNZ)