



Artful MINDS

Online Exhibition
Catalogue

PROUDLY BROUGHT TO YOU BY

Deloitte.

Dementia
Auckland 

GOW LANGSFORD



The Respite Feather

Light as Memory, Strong as Love



Each hand-crafted glass feather is unique;
a meaningful gift in memory or gratitude

\$290 each

(includes presentation box and provenance card)



Hand-crafted in glass by a leading
Māori artist – a symbol of *mana*
and remembrance.



Five natural hues
Black & White | Steel Blue | Olive Green
Marbled White | Aqua Blue

Optional Wall Mounts: \$15

Feathers can be wall-mounted using a clear
mount fixed during production. Please order
at the same time as your feather.

TO ORDER

Email foundation@dementia.nz

An invoice will be sent for payment before your order is placed. Please allow up to 4 weeks for delivery. Courier: \$20 for delivery.

Significant proceeds from every feather support Dementia Auckland's Living Well services.

THE HEART OF ARTFUL MINDS

Artful Minds was born from an extraordinary act of generosity. Artist **Kerry Switzer**, in memory of his late wife Rosie, gifted his private art collection – a legacy of love that became the catalyst for this unique fundraising initiative.

Together with Deloitte and Gow Langsford Gallery, we brought that vision to life. Guests experienced an unforgettable evening of art, conversation, and community, set against the sweeping views of Auckland's Waitematā. The result was a night of rare calibre, with significant funds raised for Dementia Auckland's *Living Well* programme.

Living Well provides walking groups, art and singing sessions, young onset gatherings, and Cognitive Stimulation Therapy – activities that help people with dementia stay connected and supported. With no government funding, these programmes exist only because of community generosity.

The evening also launched our Respite Feather – a stunning hand-crafted glass sculpture, a symbol of remembrance and a meaningful gift, providing vital support through every purchase.

We are now delighted to share the breadth of the *Artful Minds* exhibition more widely through this Online Catalogue. It includes new works from Kerry Switzer alongside outstanding pieces curated by Gow Langsford Gallery, with a share of proceeds supporting *Living Well*.

I invite you to explore the collection and consider securing a piece. Your purchase not only brings art into your life but also ensures that people living with dementia can continue to experience connection, joy, and purpose.

Ngā mihi,
Marsha Marshall
Chief Executive, Dementia New Zealand (Northern)

TO PURCHASE OR ENQUIRE

Please email foundation@dementia.nz regarding:

- **Kerry Switzer artworks:** offers invited (100% of proceeds to *Living Well*)
- **Gow Langsford artworks:** 10% of each sale donated to *Living Well*
(offer valid until Friday 19 September 2025)
- **Respite Feathers:** Order now for corporate and Christmas gifts
(pre-Christmas delivery available)

PROUDLY BROUGHT TO YOU BY



Artful Minds: A Night of Art & Impact

Artful Minds is a profound representation of collaborating to empower and to inspire. Deloitte were extremely proud to partner with **Dementia Auckland** to deliver an evening that celebrated creativity, compassion, and collective impact. The cause is deeply personal and one that is undoubtedly close to us all, where dementia made its mark has touched the lives of many in Aotearoa.

Our coming together would not have been possible without the generous donation of **Kerry Switzer's** private collection. It was an honour to showcase art in its rawest form – a canvas of rich and unfiltered emotion and expression that speaks to the heart of the human experience.

On showcase was a truly exceptional range of contemporary and historical pieces from pre-eminent New Zealand artists. Our thanks go to **Gow Langsford Gallery** for this incredibly generous contribution.

We would also like to extend a heartfelt thank you to our incredible sponsors: **Third Age Health**, **Selwyn Foundation**, and **Radius Care**. This evening would not have been possible without their generosity and commitment to living well.

Here at Deloitte, we believe that together makes progress. *Artful Minds* is an incredible example of amplifying our collective impact by leveraging our unique offerings and delivering an evening of social impact to uplift and enhance outcomes for our local communities. We empower voices and uplift communities as an important pillar of making progress together.

To those lucky enough to attend the evening, thank you for being part of such a special night. The evening was phenomenally successful, with many artworks sold. We are now delighted to share this updated exhibition catalogue with a wider audience, including several new works. Gow Langsford have extended their offer to donate 10% from all sales to Dementia Auckland's *Living Well* programme, while 100% of proceeds from Kerry Switzer's works will be donated. We invite you to explore the catalogue and secure a work that supports this vital cause.

Ngā mihi,
Kate Reid
Partner | Health
Deloitte

A SPECIAL THANK YOU TO OUR GENEROUS SPONSORS:



KERRY SWITZER COLLECTION

A Gift of Art and Love



Kerry Switzer's donation of his art collection to Dementia Auckland is both a remarkable act of generosity and a moving tribute to his late wife, Rosie. For seven years, Kerry cared for Rosie initially at their home and then in care at St Andrew's Retirement Village through her journey with dementia. Her grace, resilience and love of flowers are reflected in many of his works, making this collection a deeply personal legacy.

Born in 1942, Kerry enjoyed a successful corporate career before discovering painting in retirement. What began as a passion soon developed into a way of life, inspired by masters from Rembrandt and Cezanne to contemporary artists like Richard Schmidt. Embracing Picasso's belief in learning through imitation – "to copy, copy, copy" – Kerry honed his skills and found his own voice on the canvas. He was also assisted by New Zealand artists Wendy Leach and latterly, Wayne Sinclair.

Kerry never painted to sell, but for the enjoyment of creating – and for Rosie and their family. While she was in care he regularly brought her new paintings. "When Rosie became no longer conscious of them," he recalls "I turned to music in an attempt to keep her in the present moment". Rosie was a trained soprano.

Now almost 83, Kerry credits painting with keeping his mind sharp, his eyes open to beauty and his heart forever connected to the woman who appreciated it all.



KERRY SWITZER | Still Life in Blue

Many of Kerry's works were snapped up on the night. A new collection is now available on page 16 with offers invited. All proceeds to Dementia Auckland's Living Well services.



GOW LANGSFORD GALLERY

Online Exhibition

Aotearoa’s pre-eminent dealer gallery, Gow Langsford, was proud to partner with Dementia Auckland and Deloitte for the inaugural *Artful Minds* exhibition. We were thrilled with the response, with a strong number of significant works purchased on the night.

We are now delighted to extend the exhibition to a wider audience through this catalogue, available until **Friday 19 September 2025**. It features both contemporary and historic works from some of Aotearoa’s most respected artists, with 10% of all sales donated to Dementia Auckland’s *Living Well* programme.

This collaboration has shown the power of art, generosity, and community coming together, and we look forward to seeing these works find homes where they will be treasured.



FRANCES HODGKINS
Almond Tree, 1933
 gouache on paper
 393 x 539mm
 740 x 870 x 40mm framed
 \$185,000



CHARLES FREDERICK GOLDIE
The Widow: Perira te Kahukura (Ngāheke), 1914
 oil on canvas
 255 x 205mm
 515 x 465 x 60mm framed
 P.O.A

EXHIBITION PARTNER

GOW LANGSFORD



COLIN MCCAHERN
Mother and child, 1947
 oil on jute canvas on board
 804 x 620mm
 895 x 675 x 30mm framed
 P.O.A



COLIN MCCAHERN
Kauri, 1953
 oil on cardboard
 637 x 510mm
 825 x 700 x 55mm framed
 P.O.A



MATTHEW BROWNE
Dion, 2023
vinyl tempera and oil on linen
1400 x 1200mm
\$12,500



MATTHEW BROWNE
Morii 24, 2021
vinyl tempera and oil on linen
455 x 405mm
\$4,500



SHANE COTTON
Whisper, 1998
synthetic polymer paint on canvas
560 x 1010mm
710 x 1160 x 55mm framed
\$95,000



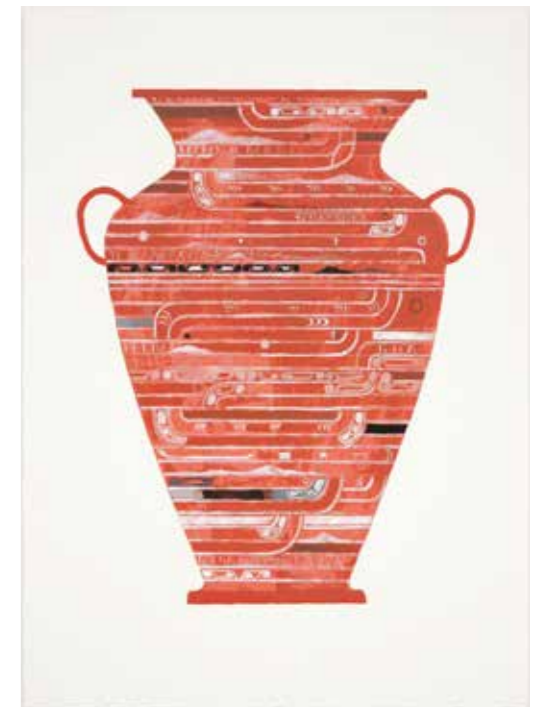
MATTHEW BROWNE
Opia 3, 2023
vinyl tempera and oil on linen
405 x 305mm
\$3,500



MATTHEW BROWNE
Montage of Attractions 46, 2024
acrylic on Fabriano Artistico 640gsm
255 x 190mm
305 x 235 x 30mm framed
\$1,450 framed



SHANE COTTON
Ruahine, 2021
Edition of 40 plus 10 AP's
screenprint on Lanaquarelle 640gsm paper
1050 x 760mm
\$11,000 framed



SHANE COTTON
Pikopiko I Whiti, 2022
Edition of 40 plus 10 AP's
screenprint on Lanaquarelle 640gsm paper
1050 x 760mm
\$11,000 framed



detail PAUL DIBBLE
Bouquet of Bird and Flowers large, 2019



ESTATE OF PAUL DIBBLE
Standing Kowhai, 2023 (cast 2024)
Edition 4 of 10 plus 1 artist's proof
bronze and 24 carat gold
1750 x 330 x 380mm
\$125,000



PAUL DIBBLE
The Lost Garden model, 2023
AP from an edition of 10
cast bronze and 24 carat gold sheet
635 x 410 x 320mm
\$38,000



ESTATE OF PAUL DIBBLE
Waiting for Time to Pass model, 2023 (cast 2025)
Edition 7 of 10 plus 1 artist's proof
cast bronze
690 x 190 x 190mm
\$18,000



PAUL DIBBLE
Bouquet of Bird and Flowers large, 2019
AP from an edition of 3 plus 1 artist's proof
cast bronze and 24 carat gold gilding
2200 x 1100 x 1200mm
\$245,000



MAX GIMBLETT
Diamond Kingdom, 2021-22

gesso, acrylic, water-based size, and French Pale 22kt
gold and red gold leaves on muslin
381 x 381 x 51mm

\$20,000



MAX GIMBLETT
Flamingo, 2021

Edition of 10 plus 3 artist's proofs
screenprint on Fabriano 50% cotton paper
560 x 560mm

\$3,500 framed



DAME LOUISE HENDERSON
Arab Portrait No.8, 1959

oil on canvas
860 x 630mm
1005 x 780 x 60mm framed

\$145,000



FRANCES HODGKINS
Flowers in a Bowl, c.1930

635 x 485mm
1025 x 845 x 30mm framed

\$195,000



MAX GIMBLETT
Throne, 2014

gesso, acrylic and vinyl polymers, resin, water based size,
aluminium leaf on canvas
381 x 381 x 51mm

\$18,000



CHRIS HEAPHY
This is How We'll Rest till Land Turns to Sand, 2024

acrylic on Belgian linen
1620 x 1300 x 35mm

\$38,000



SARA HUGHES
421 Lux, 2025

Unique from a series of 10
hand rolled gradient, monotype elements,
Chine-Colle on 290gm Fabriano paper
720 x 560mm
840 x 670 x 37mm framed

\$3,300 framed



SARA HUGHES
Scattering of Light-Whangapoua 2, 2025

Unique from a series of 5
hand rolled gradient, woodblock print with
chine-colle on 290gm Fabriano Tiepolo
760 x 560mm
875 x 670 x 40mm framed

\$3,300 framed



GREGOR KREGAR
Corten Thinker Gnome, 2022

cast iron
1200 x 430 x 350mm
Edition of 3
\$15,000



GREGOR KREGAR
Oh No Thinker Gnome, 2021

glazed ceramic, metallic
550 x 230 x 155mm
open edition
\$2,200



KARL MAUGHAN
Winiata, 2023

oil on canvas
1200 x 1600mm
\$48,000



VIRGINIA LEONARD
Urn for unwanted limbs and other things, 2023

clay, lustre and resin
260 x 240 x 250mm
\$5,000



VIRGINIA LEONARD
Urn 3, 2024

clay, lustre and resin
310 x 240 x 240mm
\$6,250



HANNAH VALENTINE
She taught us to hold our connection, 2025

bronze
870 x 235 x 235mm
\$16,000

EXHIBITION PARTNER

GOW LANGSFORD

KERRY SWITZER COLLECTION

Offers are Invited

100% of proceeds from every piece will go to:
Dementia Auckland's vital programmes and
services for people living with dementia, and
their families.



KERRY SWITZER
Peonies and Gold Jar
510 x 760mm, framed acrylic
\$1,800



KERRY SWITZER
Still Life in Blue
610 x 460mm, unframed acrylic
\$1,400



KERRY SWITZER
Hydrangeas and Pear
910 x 610mm, unframed acrylic
\$1,200



KERRY SWITZER
Floral Splendour
760 x 510mm, unframed, acrylic
\$1,200



KERRY SWITZER
Blues & Oranges
610 x 510mm, unframed acrylic
\$1,200



KERRY SWITZER
Abstract Sunflowers and Lemon
760 x 760 mm, unframed acrylic
\$1,200



KERRY SWITZER
Mod Florals
760 x 510mm, unframed acrylic
\$1,300



KERRY SWITZER
Blue and White Vase
610 x 460mm, unframed acrylic
\$1,200



KERRY SWITZER
Antique Jug & Fruit
560 x 810mm, framed oil
\$1,300



KERRY SWITZER
Mainly Orange
660 x 970mm, framed oil
\$1,500



KERRY SWITZER
Red Yellow & Blue Still Life
610 x 920mm, acrylic
\$1,300



KERRY SWITZER
Vase and Three Peaches
610 x 460mm, unframed acrylic
\$1,300



KERRY SWITZER
Still Life with Grapes
610 x 450mm, unframed acrylic
\$1,200



KERRY SWITZER
Still Life with Wilting Blooms
610 x 460mm, unframed, acrylic
\$700



KERRY SWITZER
Cornish Fishing Village
580 x 830mm, framed oil
\$1,500



KERRY SWITZER
Old Farmhouse in Snow
460 x 610mm, unframed acrylic
\$1,200



KERRY SWITZER
Bubble Blower (Jean Baptiste Chardin)
610 x 460mm, unframed acrylic
\$1,000



KERRY SWITZER
Hauraki Gulf Seascape
520 x 630mm, framed oil
\$1,200



KERRY SWITZER
Late Afternoon Sun Aoraki, Mt Cook
740 x 740mm, framed oil
\$1,500



KERRY SWITZER
Lindis Pass
630 x 740mm, framed oil
\$1,400



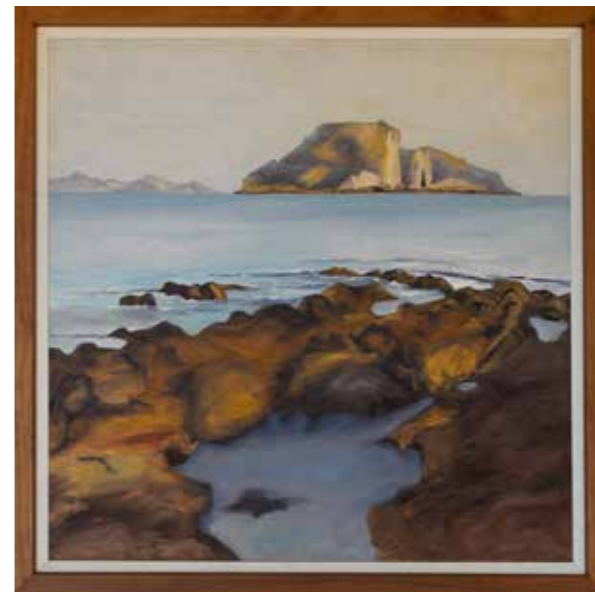
KERRY SWITZER
East Coast England
520 x 660mm, framed oil
\$1,300



KERRY SWITZER
Raglan at Low Tide
580 x 680mm, framed oil
\$1,300



KERRY SWITZER
Northern Taranaki Beachlands, NZ
730 x 730mm, framed oil
\$1,500



KERRY SWITZER
Hahei, Coromandel
710 x 710mm, framed oil
\$1,500



KERRY SWITZER
Coastline North From Kaikoura
530 x 690mm, framed oil
\$1,200



KERRY SWITZER
Side Road on Rail Trail, Otago, NZ
640 x 740mm, framed oil
\$1,500

KERRY SWITZER
Sunparched, Brown's Island, Auckland, NZ
560 x 810mm, framed oil
\$1,300





KERRY SWITZER
Big Sky MacKenzie Basin
560 x 1060mm, framed oil
\$1,750



KERRY SWITZER
Pink Peonies & Roses
610 x 610mm, unframed acrylic
\$1,000



KERRY SWITZER
Jazzy Sunflowers
610 x 610mm, unframed, acrylic
\$1,000



KERRY SWITZER
Kohimaramara Yachts, Auckland
440 x 820mm, framed oil
\$1,300



KERRY SWITZER
Checked Cloth & Flowers
610 x 460mm, unframed, acrylic
\$800



KERRY SWITZER
Road to St Bathans
460 x 840mm, framed oil
\$1,200

TO PURCHASE OR ENQUIRE

Please email
foundation@dementia.nz
regarding:

Kerry Switzer artworks:
offers invited (100% of proceeds
to *Living Well*)

Gow Langsford artworks:
10% of each sale donated to *Living Well*
(offer valid until
Friday 19 September 2025)

Respite Feathers:
Order now for corporate and
Christmas gifts (pre-Christmas
delivery available)

OTHER WORKS



KIRSTY BLACK
Damselfly Shimmy 2025
590 x 590mm, acrylic on ply
\$1,600



ALBERTO GARCIA-ALVAREZ
2000-3
mixed media on wood 2000
500 x 420mm
\$7,500
Kindly donated by Toss Grumley

“From 80,000 today to 170,000 by 2050 – dementia is one of New Zealand’s fastest-growing health challenges.”



“Life doesn’t end when dementia begins...”